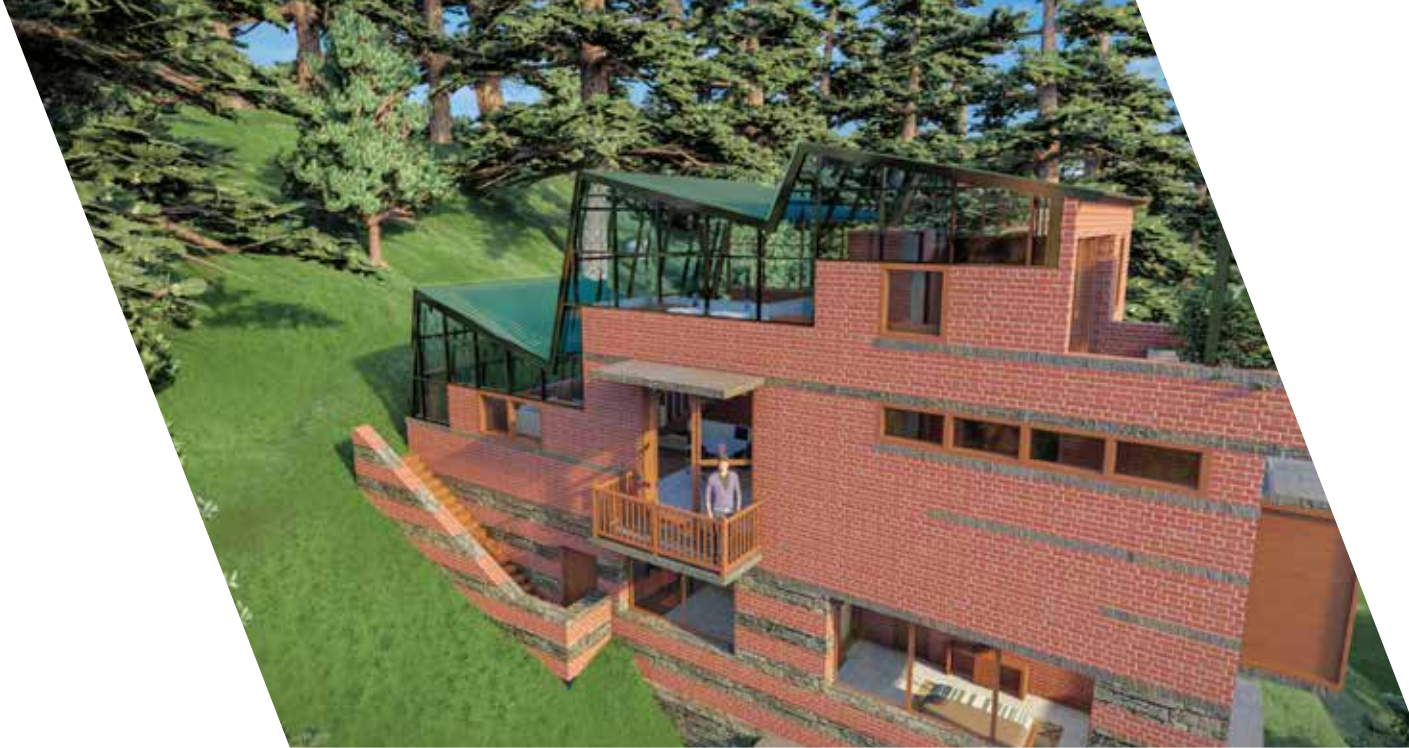




COME HOME TO THE MOUNTAINS

Nestled in the pristine greenery of the Mashobra Hills, Shimla, Vivaan – Ek Pariwar is the perfect home for you and your family.





For the select few, full-service mountain homes

Some of us are mountain people at heart, seeking expansive starry skies, crisp air and the ever-changing panoramic views of the surrounding hills. Vivaan – Ek Pariwar gives you just that, the perfect Himalayan hideaway that offers you a home in the lap of nature, in the midst of a warm and welcoming community of like-minded neighbours.

A seamless combination of the finest architecture and exquisite design, these aesthetically built cottage style homes provide not just peace and healthy living, but come equipped with modern conveniences and contemporary technology to make your life more comfortable.

Mountain living at Vivaan – Ek Pariwar is both for the active and the laidback, infused with resort-style amenities and cocooned in the natural environment you crave. Vivaan homes are an enchanting blend of aesthetic elegance and cosy solitude of the mountains.

Friends like family *(Community of like-minded neighbours)*

As the name suggests, **Vivaan – Ek Pariwar** is a haven for you, your friends and family. These days, families have become smaller and dispersed around the globe. Communities based on common interests, shared concerns and harmonious relationships are being lost. Vivaan – Ek Pariwar's mountain homes are a step towards that peaceful community living. At your mountain home, you'll entertain not just old friends and neighbours, but new neighbours as well, with similar interests and hobbies. Here, you'll find a new golf partner, a friend who enjoys going to the spa just as much as you, groups of people who share your interest in the abundant wild flora and fauna, and a companion for those long peaceful treks through the mountains. At Vivaan – Ek Pariwar, you'll find new friends who will soon become family.



Come home to comfortable luxury *(hassle free living available)*

Come home to a fully serviced mountain home equipped with VRV cooling and heating, spacious sit-outs that overlook the mountain landscape and large rooms with towering glass walls.

Along with special and discounted access to a plethora of facilities like Food & Beverage, daily housekeeping, efficient maintenance and repair, pickup and drop services from the connecting stations, fully functioning Wi-Fi and entertainment centred around a fully equipped resort.



On a platter

(Food & Beverage)

All members of Vivaan–Ek Pariwar will have a “Pariwar Card” which provides special and discounted access to the scrumptious food & beverages services available at the resort. Entertain your family and friends in style at the lovely resort surrounded by the beauty of snow-capped mountains.



Home care

(Housekeeping)

Vivaan – Ek Pariwar provides efficient and clean housekeeping services that maintain your home to your standards of hygiene and immaculate home-care. So, leave the headache of mundane housekeeping to us, while you enjoy your well-earned relaxation time. Immerse yourself in much deserved fun activities, mountain walks, spa sessions and get-togethers with friends while we take care of your home.



Keep calm and spa on

(Spa)

Refresh and rejuvenate at the resort spa, designed to calm the senses. Soak in the soothing vibes during a relaxing massage after a day of mountain trekking, golf with friends, community activities and much more. You deserve all the care and pampering.



Get fit

(Gym)

Experience the rush of adrenaline at the state-of-the-art, fully equipped gym at the resort. So strap on your music, play your favourite song and enjoy an invigorating workout at the gym.



Round the clock upkeep

(Maintenance)

Your mountain home will always be up to date with electrical, plumbing and general maintenance staff always on call. You won't have to worry about breakdowns and maintenance with our highly efficient and experienced maintenance service on call.



Safe and Sound

(Security)

Vivaan – Ek Pariwar is a safe community which offers state-of-the-art security. Feel the comfort of living in a secure environment which ensures your safety with round-the-clock security and surveillance. Leave your worries behind and be rest assured of your safety.



Car for you

(Pick up and drop facilities)

Our services at Vivaan – Ek Pariwar are not centred around only the community in which you live. We take care of your needs from the very beginning with a pick-up and drop facility from and to Chandigarh Airport and Kalka Railway Station along with other logistical back-up.



Health on call

(Medical services available)

At Vivaan, you can always be assured of your health and safety. There will always be a doctor and an ambulance on call along with other medical facilities with provisions for both resident and visiting doctors.



Social celebrations

(Cultural and social activities)

Being a part of and living in a community based on common interests, shared concerns and harmonious relationships where members provide social and cultural sustenance to each other, you'll always find yourself engaged in interesting social and cultural activities with participation from artists from outside and also from the community members.



Stay in touch

(WIFI, high speed video conferencing)

Even in the midst of mist covered mountains surrounded by lush forests, you'll always be available to your work colleagues and your loved ones across the world, through our high speed video conferencing facility, which comes with technical support.

Home Sweet Mountain Home

Located in the famed Mashobra hills of Shimla district in Himachal Pradesh, the area is surrounded by mist bathed hills, pines, oaks and deodar trees with picturesque views as far as the eye can see. Vivaan – Ek Pariwar mountain homes are built in the midst of this peaceful beauty.

Designed by award winning architects Gautam Bhatia and Navin Gupta of the Architecture Alliance, Vivaan homes are made on the slopes, almost as if they were a part of the mountains themselves. Shimla, like the eternal city of Rome, was built upon seven hills; ***Observatory Hill, Prospect Hill, Summer Hill, Bantony Hill, Elysium Hill, Jakhoo Hill and Inverarm Hill.*** Named after the hills that Shimla is built upon, these brilliantly constructed and designed homes that sit on an uphill slope, have elegant facades and are reminiscent of graceful British cottages.

The features of the mountain homes are:

- Freehold property
- Designed to let in maximum light and air
- Big decks and balconies
- Aesthetic interiors and fittings
- Easy-to-open shutters for cross ventilation
- Elegant and natural facades





Vivaan – Ek Pariwar homes are built keeping you and your preferences in mind, whether you are a family of two or four. These beautiful, aesthetically designed mountain homes come in 2 formats:



1BHK



2BHK

A woman with short blonde hair, wearing a light green top and white pants, is sitting in a wooden armchair on a balcony. She is smiling and looking towards the camera. The balcony has a wooden railing and a brick pillar. In the background, there are lush green trees and a view of mountains under a blue sky. A dark brown triangular graphic is overlaid on the right side of the image, containing text.

Vivaan: Ek Pariwar Membership

With ownership of a DU in Vivaan, you become a part of “Vivaan – Ek Pariwar” – a warm and welcoming community of like-minded neighbours. Once you’ve become a member of this exclusive community, you’ll be e-introduced to all members and subsequently ‘homed in’ with other members in an informal get together at Delhi or Shimla so that the incoming members get to know the other members of the community.



After that:

- Your profile gets on the 'For Members Only' dedicated VIVAAN on-line page which becomes the forum for regular interaction and to stay in touch even when you are not in town.
- The Vivaan Mountain Homes are reasonably priced and we'll provide a 'Put Option' to the resident after 5 years where, if the resident wishes to exit, he/she at his option can sell the unit back to the developing company which in turn, will be obliged to buy back at least 1 unit every year should a binding offer come. The buy-back price will be based on a transparent formula based on weighted average of Approved Real Estate Index, realty price trend in area and upkeep of the proposed unit.
- The sold back unit then will be offered to the person or persons on the waiting list if any, or sold as per the mechanism which is designed to ensure that the new community member is also a person who cherishes the vision and shares the objectives of the community for the continuing well-being. This exercise will help keep your investment liquid as far as possible so that, should one's priorities change in the future, one does not get trapped in an illiquid real estate. It will also help preserve the homogeneity of the community on a continuous basis.
- Further, if a community member does not wish to use his/her mountain home in a particular season, he/she will have the right to attach the unit to the Resort so that it can be let out and utilised during the tourist season. It will then provide an additional income to the member. It is precisely for this reason that the number of room keys in the Resort have been kept low.



How to get there



Distances of the Tourist Places from Vivaan Ek Pariwar

(All figures are according to the google map)

- Naldehra: 5.6 Kms
- Kufri: 20.8 Kms
- The Mall, Shimla: 18.5 Kms
- The Retreat: 17.1 Kms
- Craignano Nature park: 5.7 Kms
- Wild Flower Hall: 16.9 Kms
- Tattapani: 39 Kms
- Chail: 51.9 Kms
- Kali Tibba: 53.3 Kms

Distance of the landmarks from Vivaan Ek Pariwar

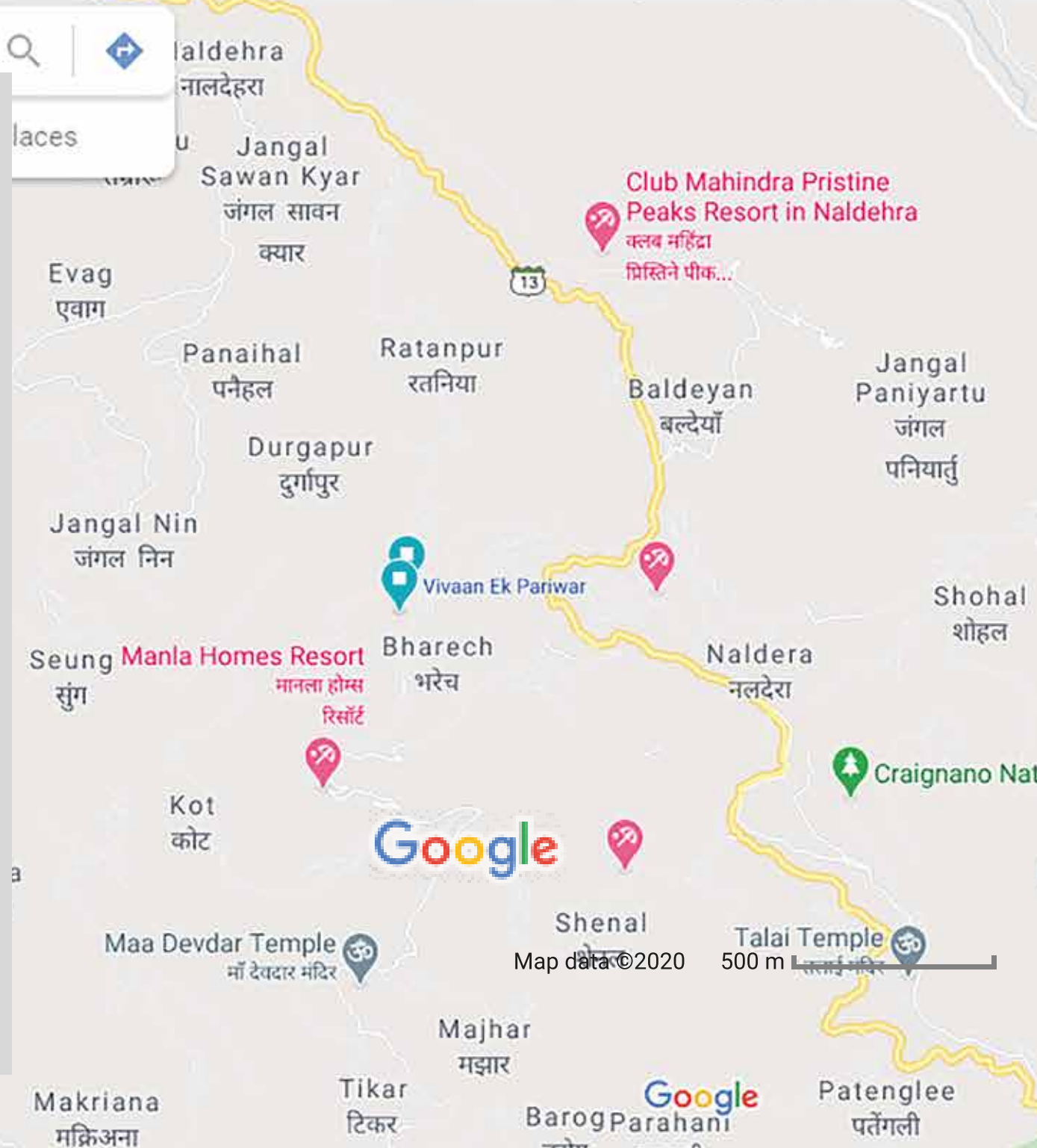
(All figures are according to the google map)

- Mashobra: 9.5 Kms
- Dhalli By-pass: 14.8 Kms
- Sanjauli: 15.7 Kms
- Shimla Railway Station: 21.3 Kms
- Shimla Airport (Jubbarhatti): 43 Kms

Distance of the major cities from Vivaan Ek Pariwar

(All figures are according to the google map)

- Shimla: 18 Kms
- Solan: 63 Kms
- Kalka: 106 Kms
- Chandigarh: 133 Kms
- New Delhi: 378 Kms



Map data ©2020 500 m

Vivaan - Ek Pariwar home

Named after the seven hills that Shimla is built upon, each Vivaan mountain home embodies an aspect of the hill it is named after.



Prospect

Named for the hill that is one of the most popular religious destinations, this home, just like the hill it's named after, provides ample views of the dense deodar forests.

Layout:



AREA: 1133 sq.ft.

**Ground Floor
PROSPECT 1 (P1)**



AREA: 1428 sq.ft.

**First Floor
PROSPECT 2 (P2)**



AREA: 1539 sq.ft.

**Second Floor
PROSPECT 3 (P3)**

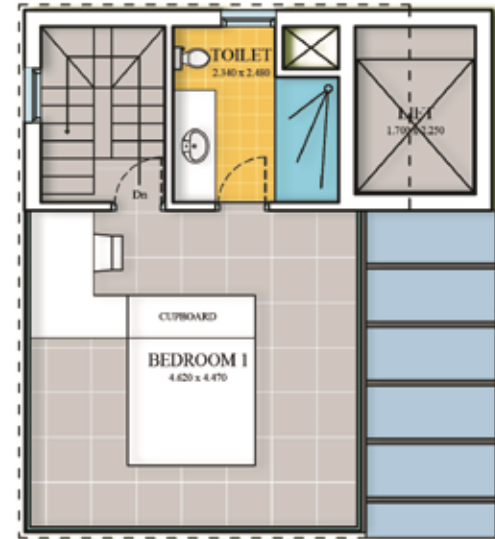


AREA: 1539 sq.ft.

**Third Floor
PROSPECT 4 (P4)**



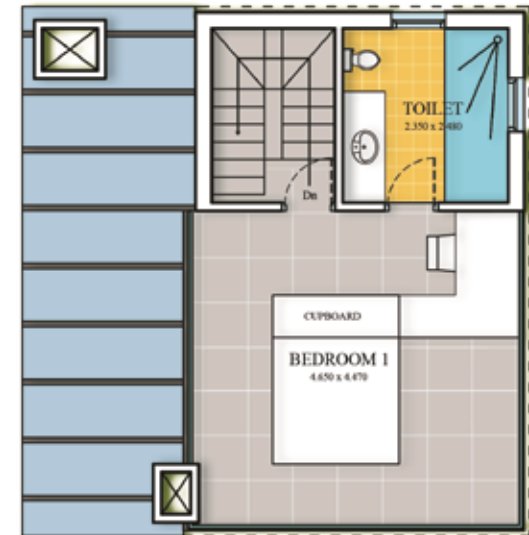
Fourth Floor (Duplex)
PROSPECT 5 (P5)



AREA: 1050 sq.ft. Fifth Floor (Duplex)
PROSPECT 5 (P5)



Fourth Floor (Duplex)
PROSPECT 6 (P6)



AREA: 1144 sq.ft. Fifth Floor (Duplex)
PROSPECT 6 (P6)



Summer Hill

This home is named after the hill renowned for having housed prominent personalities like Mahatma Gandhi and Princess Amrit Kaur and is also one of the stations for the Kalka Shimla toy train.

Layout:



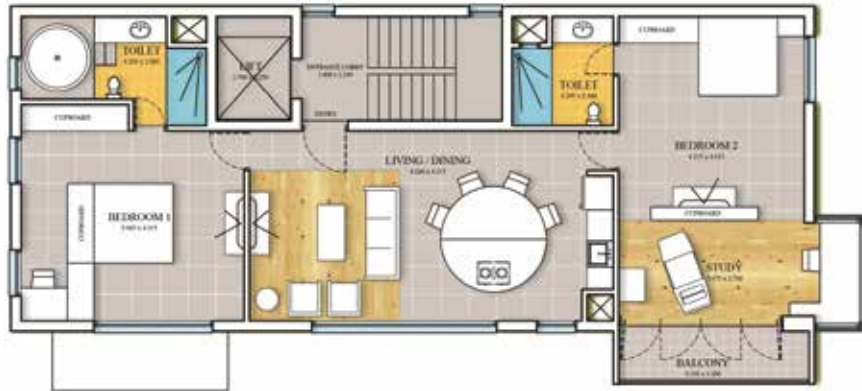
AREA: 1133 sq.ft.

Ground Floor
SUMMER HILL 1 (SH1)



AREA: 1428 sq.ft.

First Floor
SUMMER HILL 2 (SH2)



AREA: 1539 sq.ft.

Second Floor
SUMMER HILL 3 (SH3)

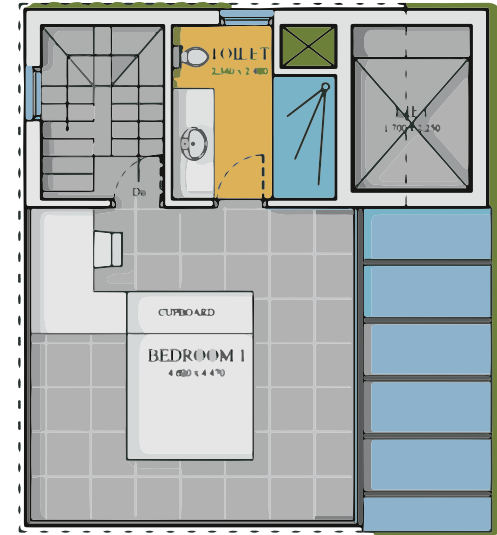


AREA: 1539 sq.ft.

Third Floor
SUMMER HILL 4 (SH4)



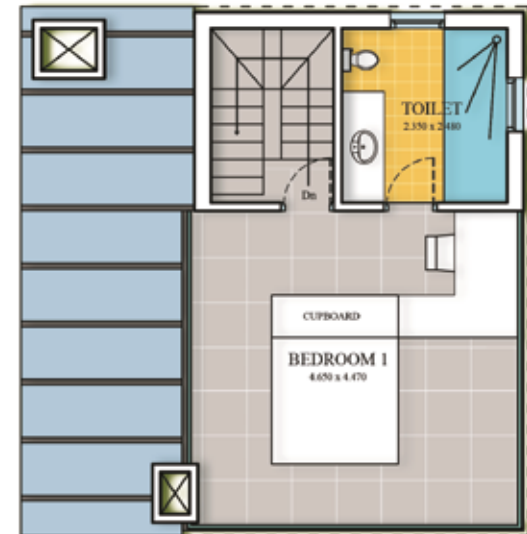
Fourth Floor (Duplex)
SUMMER HILL 5 (SH5)



AREA: 1050 sq.ft. Fifth Floor (Duplex)
SUMMER HILL 5 (SH5)



Fourth Floor (Duplex)
SUMMER HILL 6 (SH6)



AREA: 1144 sq.ft. Fifth Floor (Duplex)
SUMMER HILL 6 (SH6)

**Areas shown are calculated on built up basis*



Observatory

The Observatory hill houses the IAS, Indian Institute of Advanced Study which is one of the choicest tourist attractions of the area. The building was constructed in 1884 to 1888 for the Viceroy of India, Lord Dufferin's summer residence. The Observatory Mountain home also epitomises the same grace and elegance of the Viceroy's home.

Layout:



AREA: 1133 sq.ft.

Ground Floor
OBSERVATORY 1 (01)



AREA: 1428 sq.ft.

First Floor
OBSERVATORY 2 (02)



AREA: 1539 sq.ft.

Second Floor
OBSERVATORY 3 (03)



AREA: 1539 sq.ft.

Third Floor
OBSERVATORY 4 (04)



Fourth Floor (Duplex)
OBSERVATORY 5 (05)



AREA: 1050 sq.ft. Fifth Floor (Duplex)
OBSERVATORY 5 (05)



Fourth Floor (Duplex)
OBSERVATORY 6 (06)



AREA: 1144 sq.ft. Fifth Floor (Duplex)
OBSERVATORY 6 (06)

to remain compliant with RERA



Inverarm

Inverarm hill houses the state museum of Himachal Pradesh as well as a large bird park which attracts many visitors. Staying at your Inverarm mountain home will give you a taste of local culture, history and nature just like its namesake hill. And who knows? Maybe you might even spot the state bird, the Himalayan Monal during your stay here.

Layout:



AREA: 981 sq.ft.

Ground Floor
INVERARM 1



AREA: 1536 sq.ft.

Ground Floor
INVERARM 2



AREA: 1914 sq.ft.

Ground Floor
INVERARM 3



AREA: 1414 sq.ft.

First Floor
INVERARM 4



AREA: 1412 sq.ft.

**First Floor
INVERARM 5**



AREA: 1382 sq.ft.

**First Floor
INVERARM 6**



AREA: 1134 sq.ft.

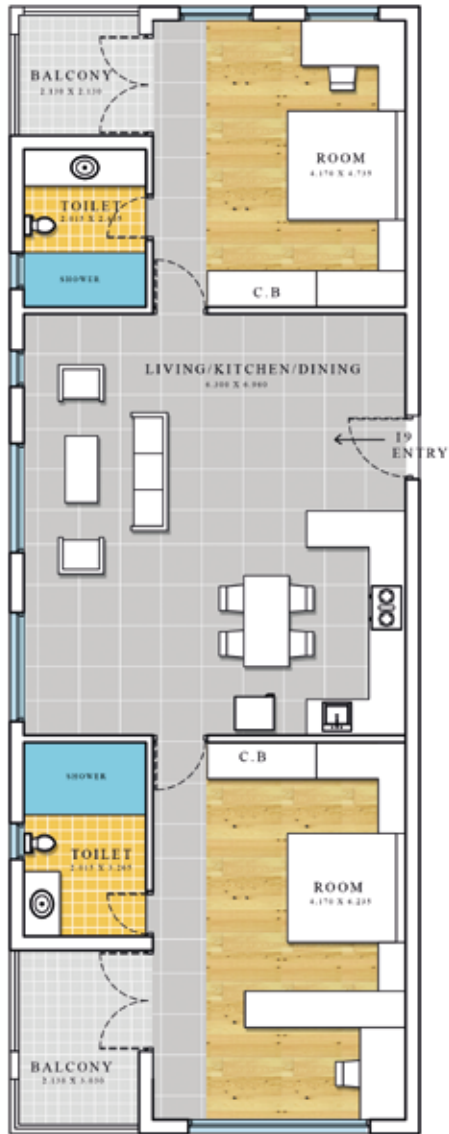
**First Floor
INVERARM 7**



AREA: 1632 sq.ft.

**First Floor
INVERARM 8**

Layout:



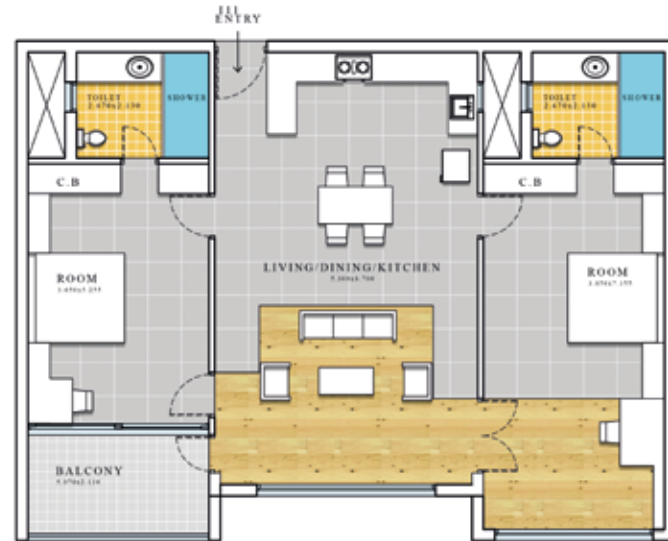
AREA: 1674 sq.ft.

Second Floor
INVERARM 9



AREA: 1400 sq.ft.

Second Floor
INVERARM 10



AREA: 1862 sq.ft.

Second Floor
INVERARM 11



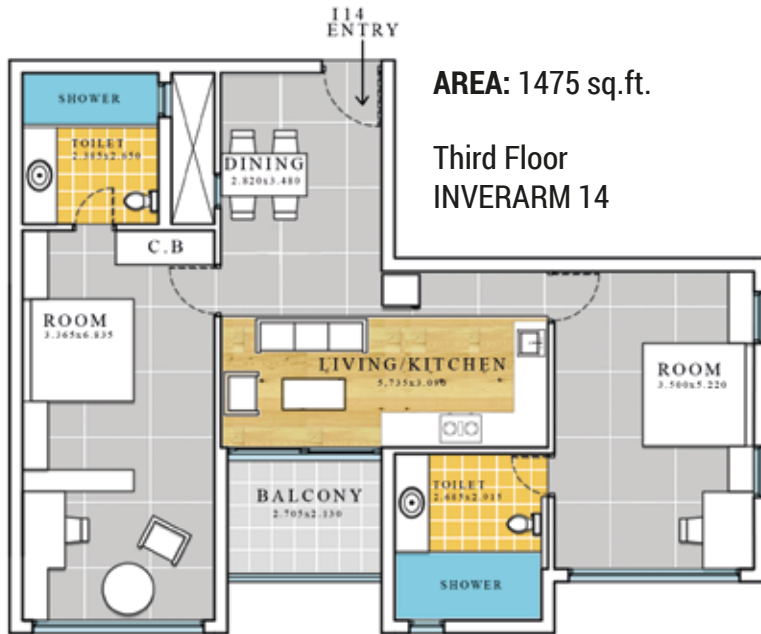
AREA: 1681 sq.ft.

**Second Floor
INVERARM 12**



AREA: 1056 sq.ft.

**Third Floor
INVERARM 13**



AREA: 1475 sq.ft.

**Third Floor
INVERARM 14**



AREA: 1840 sq.ft.

**Third Floor
INVERARM 15**

Layout:



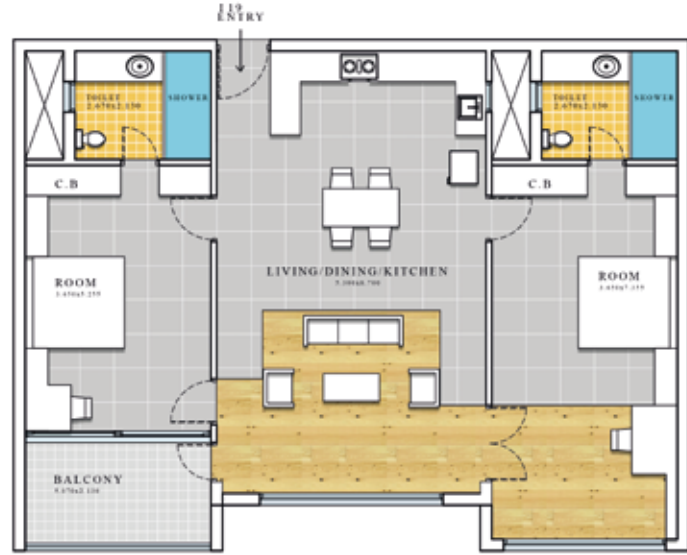
AREA: 1670 sq.ft.
Third Floor
INVERARM 16



AREA: 1133 sq.ft.
Fourth Floor
INVERARM 17



AREA: 1466 sq.ft.
Fourth Floor
INVERARM 18



AREA: 1867 sq.ft.
Fourth Floor
INVERARM 19



AREA: 1685 sq.ft.
Fourth Floor
INVERARM 20



AREA: 1056 sq.ft.
Fifth Floor
INVERARM 21

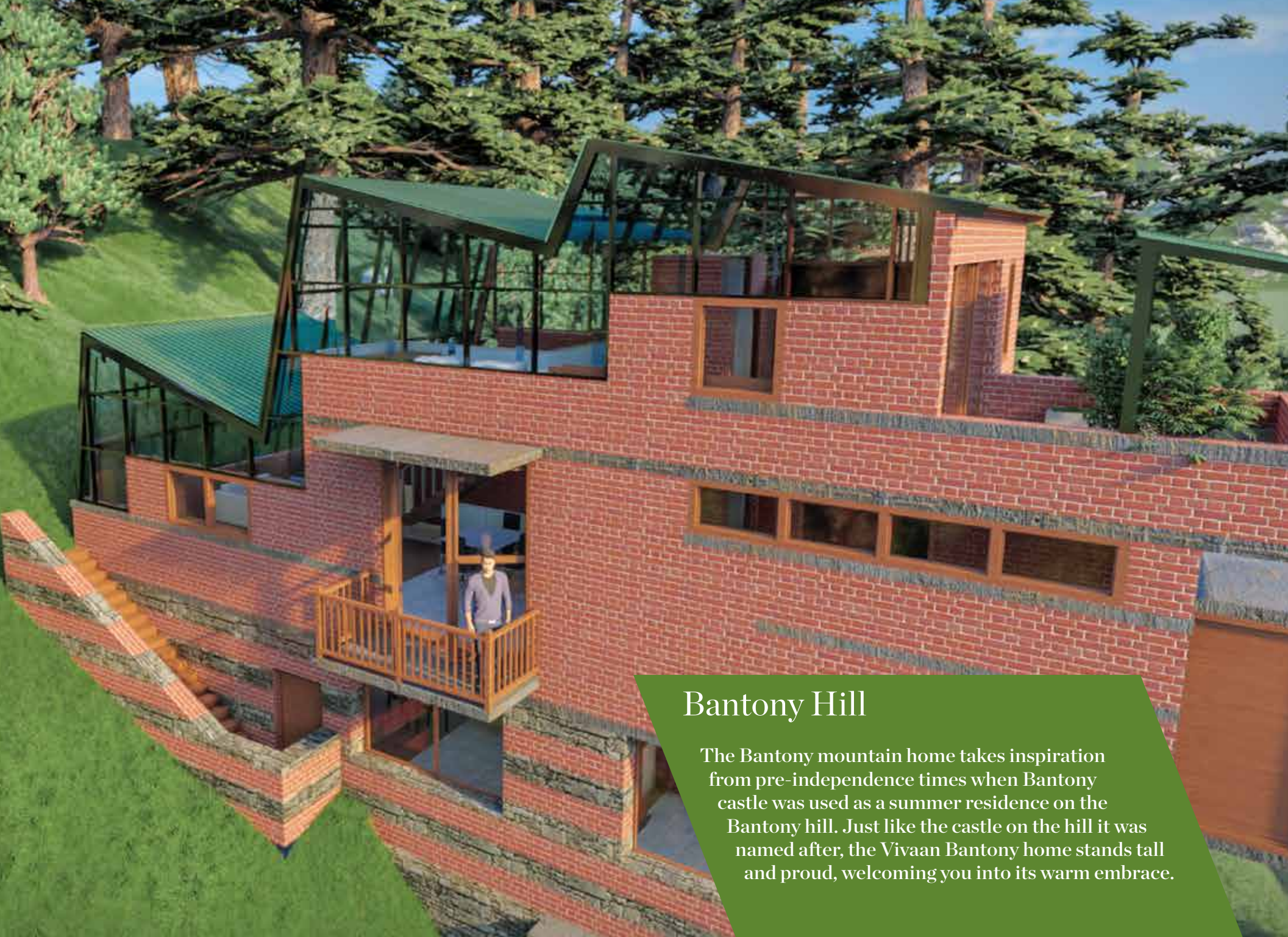
AREA: 1670 sq.ft.
Fifth Floor
INVERARM 24



AREA: 1475 sq.ft.
Fifth Floor
INVERARM 22



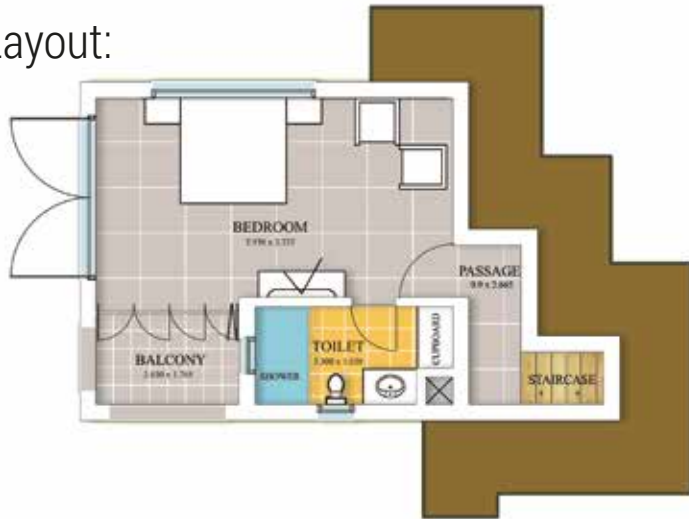
AREA: 1840 sq.ft.
Fifth Floor
INVERARM 23



Bantony Hill

The Bantony mountain home takes inspiration from pre-independence times when Bantony castle was used as a summer residence on the Bantony hill. Just like the castle on the hill it was named after, the Vivaan Bantony home stands tall and proud, welcoming you into its warm embrace.

Layout:



Ground Floor (Duplex)
BANTONY 1 (B1)



AREA: 1452 sq. ft.

First Floor (Duplex)
BANTONY 1 (B1)



Second Floor (Duplex)
BANTONY 2 (B2)



AREA: 1563 sq. ft.

Third Floor (Duplex)
BANTONY 2 (B2)

**Areas shown are calculated on built up basis*



Jakhoo

The Jakhoo hill stands higher than all others. It is known as the highest point of Shimla at over 8000 feet above sea level. Just like from the hill, you'll be able to see the glorious sunset and sunrise from the Jakhoo Mountain home.

Layout:

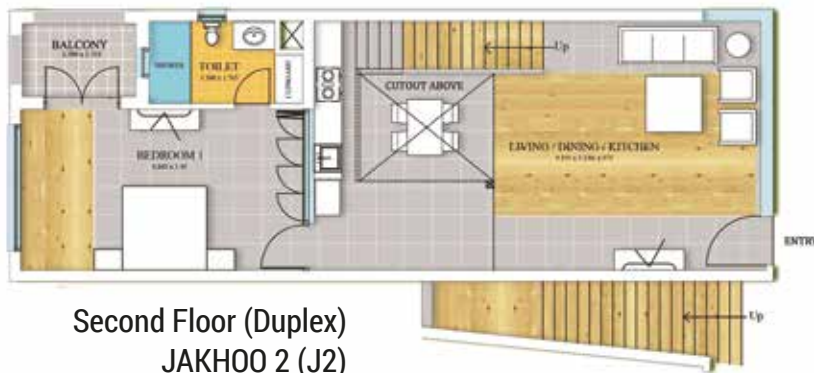


Ground Floor (Duplex)
JAKHOO 1 (J1)



AREA: 1413 sq.ft.

First Floor (Duplex)
JAKHOO 1 (J1)

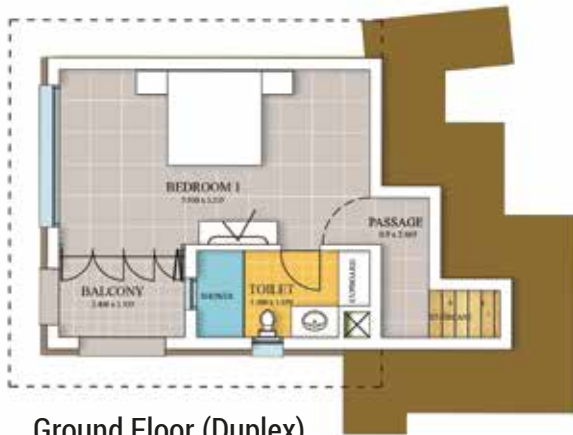


Second Floor (Duplex)
JAKHOO 2 (J2)

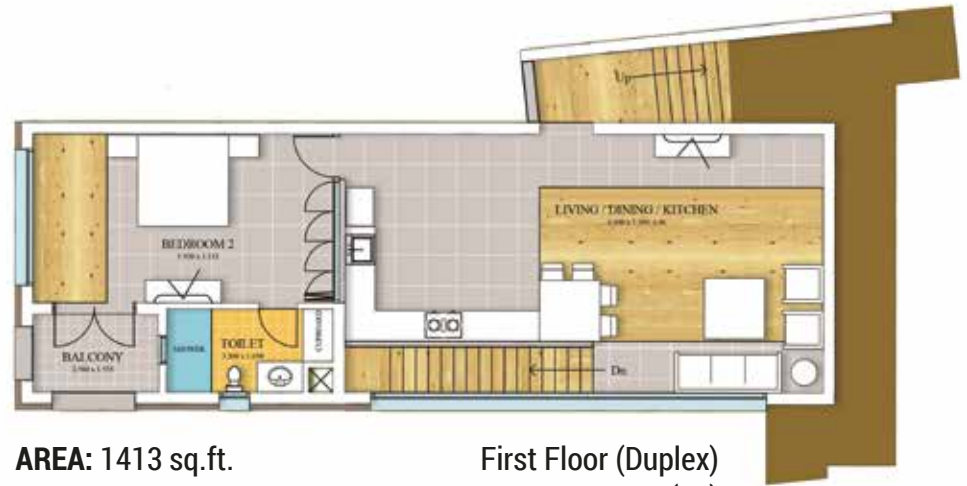


AREA: 1563 sq.ft.

Third Floor (Duplex)
JAKHOO 2 (J2)



Ground Floor (Duplex)
JAKHOO 3(J3)



AREA: 1413 sq.ft.

First Floor (Duplex)
JAKHOO 3(J3)



Second Floor (Duplex)
JAKHOO 4(J4)



AREA: 1563 sq.ft.

Third Floor (Duplex)
JAKHOO 4(J4)

**Areas shown are calculated on built up basis*



Elysium Hill

The Elysium house is named after a tall hill in the North Western part of Shimla. Elysium hill offers beautiful views of Shimla city. One visit and you shall be spellbound by the beauty of the valley as it spreads out below your feet, just like the views you'll see every morning from your Elysium mountain home.

Layout:



Ground Floor (Duplex)
ELYSIUM 1 (E1)



AREA: 1335 sq.ft.

First Floor (Duplex)
ELYSIUM 1 (E1)

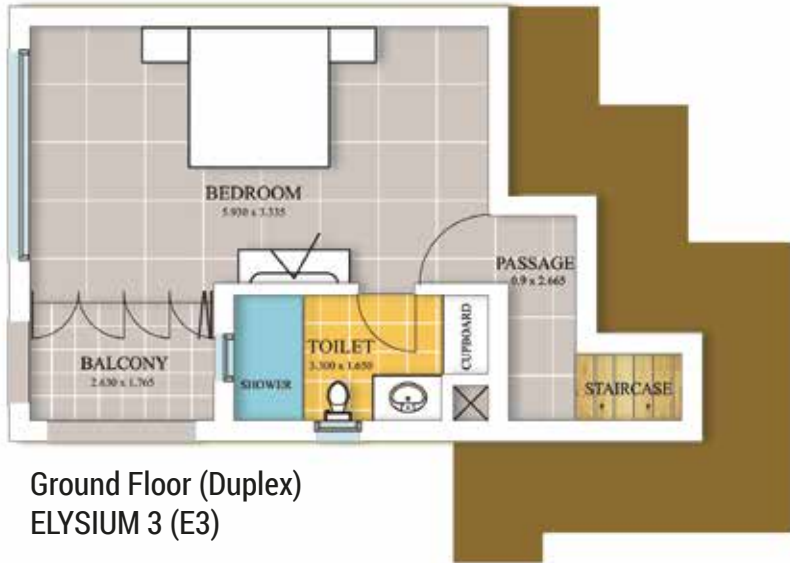


Second Floor (Duplex)
ELYSIUM 2 (E2)

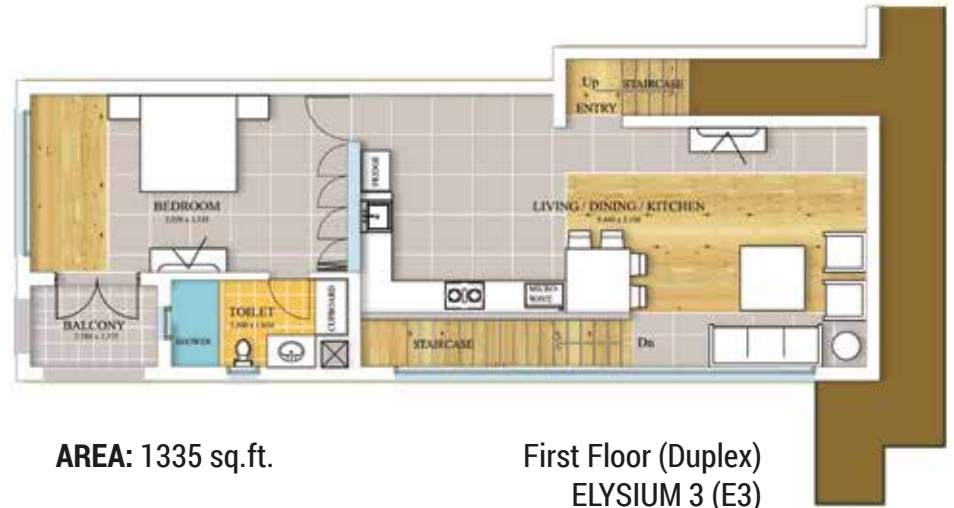


AREA: 1476 sq.ft.

Third Floor (Duplex)
ELYSIUM 2 (E2)



Ground Floor (Duplex)
ELYSIUM 3 (E3)



AREA: 1335 sq.ft.

First Floor (Duplex)
ELYSIUM 3 (E3)



Second Floor (Duplex)
ELYSIUM 4 (E4)



AREA: 1476 sq.ft. Third Floor (Duplex)
ELYSIUM 4 (E4)

**Areas shown are calculated on built up basis*



Vivaan-Ek Pariwar, Village Saunl,
Baldeyan, Shimla, Distt. Shimla,
Himachal Pradesh-171007
Contact: +91 9816360632,
+91 9810289050
www.vivaanekpariwar.com